

AGM Battery Sun Store 100

340093 • 06/2017

The Phaesun Sun Store AGM batteries are very robust, waterproof, cycle-proof and have an extremely long life expectancy. They are highly efficient and best suitable as allround-batteries.



Applications

- All purpose
- Uninterruptable Power Supply (UPS)
- Electric Power System (EPS)
- Emergency backup power supply
- Emergency light
- Railway or aircraft signal
- Alarm and security system
- Electronic apparatus and equipment
- Communication power supply
- DC power supply
- Auto control system
- Solar powered Off-Grid-Systems
- Hybridsystems with wind and hydro power
- Renewable power supply

Technical Data	Sun Store 100
Nominal voltage	12 V
Nominal Capacity (10HR)	100,0 Ah
Dimensions	330 x 173 x 220 mm
Approx. Weight	31,5 kg
Terminal	T11
Container Material	ABS
Rated Capacity @ 25 °C	115 Ah / 1,15 A (100 h; 1,85 V/cell) 107 Ah / 5,35 A (20 h; 1,80 V/cell) 100 Ah / 10,0 A (10 h; 1,80 V/cell) 87 Ah / 17,4 A (5 h; 1,75 V/cell) 78 Ah / 26,0 A (3 h; 1,75 V/cell) 62 Ah / 62,0 A (1 h; 1,60 V/cell)
Max. Discharge Current	1200 A (5s)
Internal Resistance	Approx. 4,9 mΩ
Operation Temp. Range	Discharge: -15 ~ +50 °C Charge: -15 ~ +40 °C Storage: -15 ~ +40 °C
Nominal Operating Temp. Range	25 ± 3 °C
Cycle Use	Initial Charging Current less than 30,0 A; Voltage 14,4 V – 15,0 V at 25 °C Temp. Coefficient -30m V/°C
Standby Use	No limit on Initial Charging Current Voltage 13,5 V – 13,8 V at 25 °C Temp. Coefficient -20 mV/°C
Capacity affected by Temp.	40 °C, 103% 25 °C, 100% 0 °C, 86%
Self Discharge	Sun Store batteries may be stored for up to 6 months at 25 °C and then a freshening charge is required. For higher temperatures the time interval will be shorter.
Life expectancy	8 years at 25 °C with charge voltage 2,25 V/cell
Article No.	340093

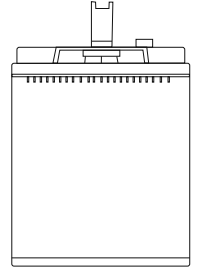
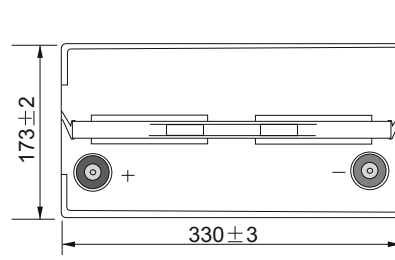
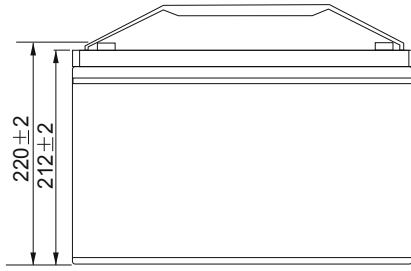
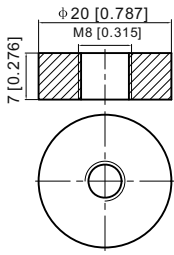
Conform to:

IEC60896-21&22 and/or
IEC61427

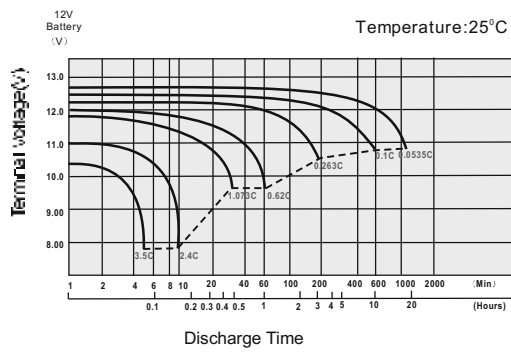


T11 Terminal

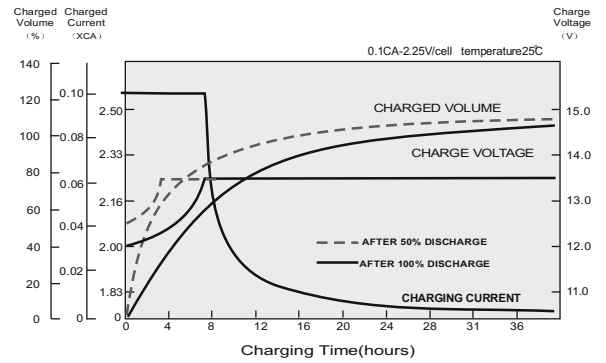
Unit: mm [inches]



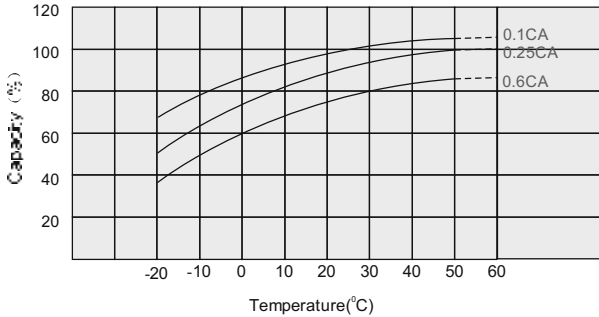
Discharge Characteristics



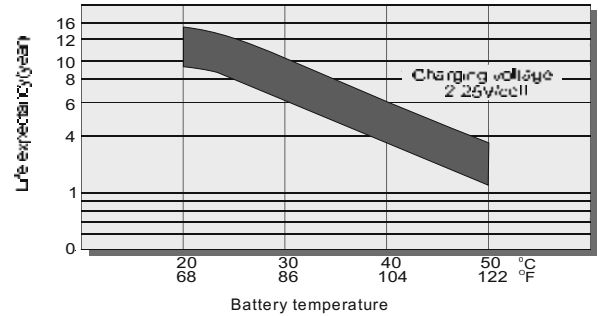
Effect of Temperature on Long Term Float Life



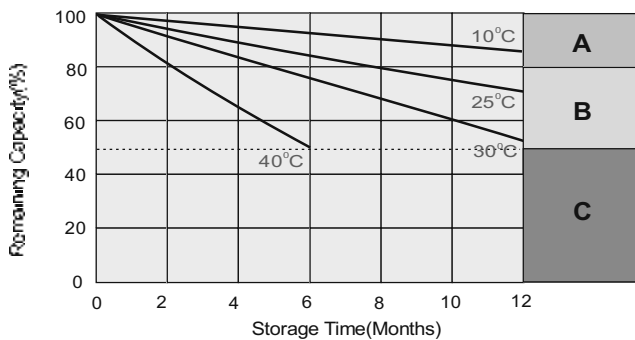
Cycle Service Life



Self Discharge at Different Temperatures



Self Discharge Characteristics



- A** No supplementary charge required
(Carry out supplementary charge before use if 100% capacity is required.)
- B** Supplementary charge required before use. Optional charging way as below:
 1. Charged for above 3 days at limited current 0.25CA and constant voltage 2.25V/cell.
 2. Charged for above 20 hours at limited current 0.25CA and constant voltage 2.45V/cell.
 3. Charged for 8-10 hours at limited current 0.05CA.
- C** Supplementary charge may often fail to recover the capacity.
The battery should never be left standing till this is reached.